

ENVIRONMENTAL INSIGHTS..

ISSUE 20

The CIP Environmental Insight is a bimonthly update of what's happening around the environmental agenda within the built environment. It's free and open to everyone. Some content is only available to subscribers of the CIP Environmental Manual and CIP Knowledge.



Grosvenor starts net zero mentoring its contractors

Developer Grosvenor is pioneering a net zero mentoring programme to take its supply chain along the path to net zero carbon.

[READ MORE](#)

New Low Carbon Concrete Route Map

The Institution of Civil Engineers (ICE) has published its [Low Carbon Concrete Route Map](#). The document explores how the industry can adopt the latest tools, technologies and materials to continue using concrete.

[READ MORE](#)


Judith Batchelar announced as Deputy Chair of Environment Agency

Environment Secretary George Eustice has appointed Judith Batchelar as Deputy Chair of the Environment Agency.

[READ MORE](#)

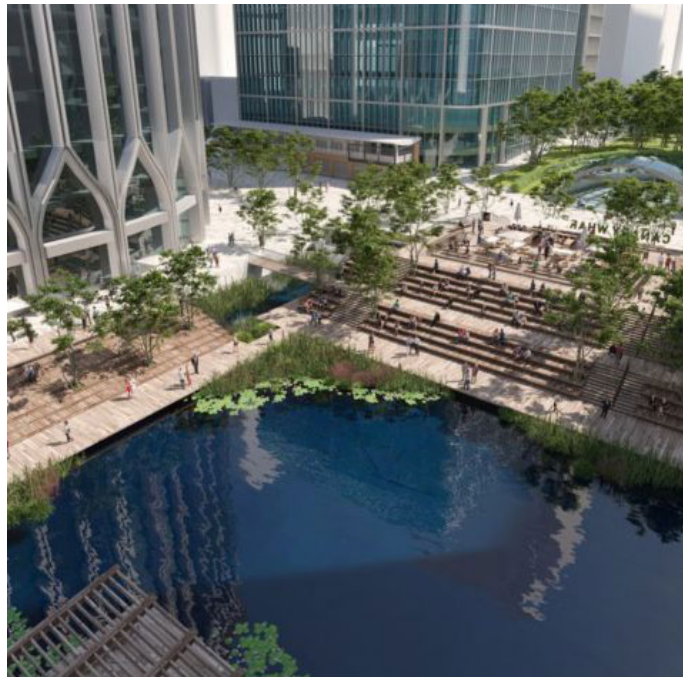

New Drive Out Diesel guide from Build UK

Build UK has published a new '[Drive Out Diesel](#)' guide to help the industry reduce its reliance on diesel. The guide is in line with the CO2nstruct Zero target to eliminate 78% of diesel plant from sites by 2035.

[READ MORE](#)


Canary Wharf Group and Eden Project partner to boost urban biodiversity

Property Developer Canary Wharf Group has partnered with the Eden Project to model how to boost biodiversity in urban environments.

[READ MORE](#)


New model specification for the purchase of reclaimed steel sections from BCSA

Rising steelwork prices and environmental benefits of recycling are driving a rise in reclaimed structural steel.

[READ MORE](#)


Manchester major hotel refit announced as an alternative to demolishing and rebuilding.

Hotel fit-out and refurbishment specialist Calma Group is set to work on a major hotel overhaul in Manchester city centre.

[READ MORE](#)


If you have any queries regarding these products please call 0870 078 4400 or alternatively email sales@cip-books.com

