

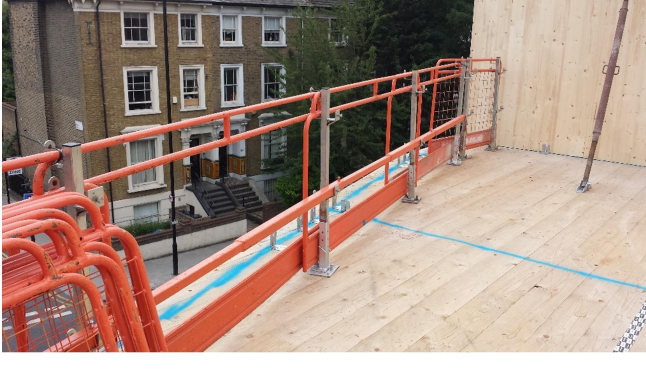
# Health & Safety Insight - Issue 9

## Snapshot of what's happening in the world of health and safety

The CIP Health & Safety Insight is a bimonthly update of what's happening around the health and safety agenda within the built environment. It's free and open to everyone. Some content is only available to subscribers of the CIP Health and Safety Manual and CIP Knowledge.

### News & Policy Updates

#### Workers left without edge protection on fifth floor roof



AN EXAMPLE OF GOOD PRACTICE

A Blackpool contractor has been fined after putting employees at significant risk of a fall from height while working on a roof.

Blackpool Magistrates' Court heard how on two occasions in July 2019, two employees of Ron Richardson Construction Ltd were observed waterproofing a flat roof at fifth floor level close to an unprotected edge without the means to prevent a fall. The workers were not being monitored and had accessed the roof to do the work as they were unable to carry out the task from below with the equipment, which had been provided for them.

[READ MORE](#)

#### New Industry Placement Card



Following the consultation undertaken by CSCS earlier this year, the CLC has endorsed the introduction of an [Industry Placement Card](#) for students registered onto qualifications or training courses which require a work placement of 30 days or more, such as T Levels. The new card is expected to be available ahead of the 2021/22 academic year, and applicants must be aged 16 or above and pass the CITB Health, Safety and Environment Test (or equivalent offered by CSCS partner schemes). The [Industry Placement Card](#) will not be required for short work experience initiatives such as those organised by schools.

[FIND OUT MORE](#)

#### HSE launch Stress Talking Toolkit for the construction sector



Developed with the help of industry stakeholders, HSE has published a Work-related Stress Talking Toolkit for the construction sector.

Starting the conversation is an important first step in preventing work-related stress, and the toolkit will help to do that.

[FIND OUT MORE](#)

#### HSE eBulletin: Coronavirus (COVID-19) – latest advice and information

An update on the latest information for employers and employees in the construction industry, including details of advice and guidance around the coronavirus outbreak.

[Check the HSE website daily for the latest updates.](#)

#### After UK Transition podcast from HSE: Listen to all episodes now



HSE's 'Working with Chemicals' podcast provides up-to-date guidance on how to keep your business moving now that the UK Brexit Transition period has ended. The series provides information on the changes to how chemicals will be regulated now the UK has left the EU, and features experts from HSE's Chemicals Regulation Division, as well as a variety of industry voices. You can [download and listen to all episodes](#) for free.

To access future episodes on release, [subscribe](#) to the podcast series.

#### Keep your construction site protected with BIMsafe



The BIMsafe technology will allow you to easily identify any potential health and safety risks that may occur on your construction project.

##### Do you want to

- avoid large fines from the HSE and the Environment Agency?
- make sites safer for your workers?
- easily create a Design Risk Register, a Risk Assessment and Method Statement and a Temporary Works Register?

If the answer to all of these is **YES** then click [here](#) to learn about the five key health and safety requirements when working on a construction project.

#### For more best practice ideas on how to meet the challenges posed by the pandemic on your site visit the Considerate Constructors Scheme Best Practice Hub

#### New campaign to raise awareness of poor mental health



The Lighthouse Construction Industry Charity has launched its 'Help Inside the Hard Hat' campaign to raise awareness of mental wellbeing issues in the construction industry. In the UK, two construction workers take their own lives every working day and stress, anxiety and depression account for a fifth of all work-related illnesses.

[READ MORE](#)

#### Builder receives custodial sentence for failing to report an incident where a worker was seriously injured



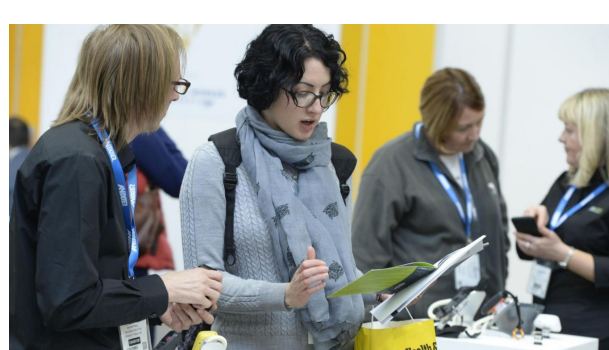
A builder has been imprisoned for 24 weeks after he failed to report a serious incident at a construction site he was in charge of. Westminster Magistrates' Court heard that on 8 January 2019, worker Simon Lewis had been clearing a site on Clarence Avenue, New Malden with an excavator so a new house could be built. The excavator tipped while digging and it trapped Mr Lewis' leg, resulting in an amputation.

[READ MORE](#)

### Get Involved...

Do you have something you'd like to contribute to the Insight (best practice, blogs, pictures etc)? If so please contact us on [sales@cip-books.com](mailto:sales@cip-books.com)

### Dates for the diary...



**Safety and Health Expo**  
12-14 July 2021  
London Excel



**The Health and Safety Event**  
7-9 September 2021  
Birmingham NEC

#### Not a Subscriber Yet?

The CIP Health & Safety Manual is a great resource to help navigate environmental issues when working in the built environment. It is written by industry experts and provides practical advice on complying with legislation together with best practice. For more information on subscribing to the manual from only £22 per month click [here](#)

[START YOUR FREE TRIAL](#)
