

Health & Safety Insight - Issue 10

Snapshot of what's happening in the world of health and safety

The CIP Health & Safety Insight is a bimonthly update of what's happening around the health and safety agenda within the built environment. It's free and open to everyone. Some content is only available to subscribers of the CIP Health and Safety Manual and CIP Knowledge.

News & Policy Updates

House builder backs plant warning cameras on all sites



AN EXAMPLE OF GOOD PRACTICE

House builder Countryside is the first developer to demand all telehandlers on its sites feature the latest worker proximity smart warning cameras.

Countryside is working in collaboration with technology partner Safety Shield Global and Ardent Hire Solutions. As a result, all of its forklift telehandlers will now feature collision avoidance artificial intelligence cameras.

[READ MORE](#)

Construction suicide rates on the increase



The Lighthouse Construction Industry Charity commissioned Glasgow Caledonian University to research suicide statistics from 2015 to 2019. Alarming results show suicides increased in construction.

Analysis of suicides by job showed the number per 100,000 for construction workers rose from 26 to 29 between 2015 and 2019.

The overall ratio stayed the same. Construction industry workers are three times more likely to take their own life than people in other sectors.

[FIND OUT MORE](#)

CIP Knowledge - H&S Manual Updates



CIP has published the latest updates to the [Construction Health and Safety Manual](#) and [CIP Knowledge](#).

- Updated guidance on Leading and Lagging Indicators and Lone Workers.
- An update to the CLOCs references and an updated [Build UK COVID Flowchart](#).
- Revised Guide to CSCS cards and Partner Card Scheme Information.
- In the Legal section there is new guidance on COVID Enforcement Notices and updated information on Inquests
- New and updated legislation in the Register of Legislation, both for England, Scotland and Wales, and Northern Ireland
- A completely revised Fire section
- An update to the MEWPs section by IPAF.
- A completely revised Health and Safety in Offices section

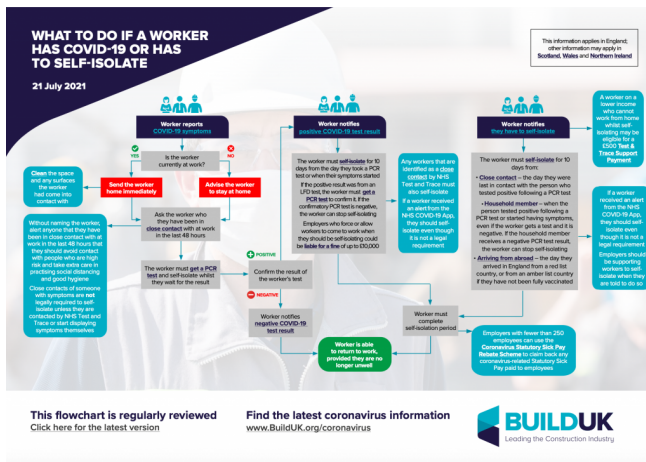
[FIND OUT MORE](#)

HSE eBulletin: Coronavirus (COVID-19) – latest advice and information

An update on the latest information for employers and employees in the construction industry, including details of advice and guidance around the coronavirus outbreak.

[Check the HSE website daily for the latest updates.](#)

Updated COVID-19 flowchart from Build UK



Build UK has issued an updated version of its [COVID-19 flowchart](#). This useful flow chart illustrates when to self-isolate. The Government has [confirmed](#) that in exceptional circumstances critical workers may be able to leave self-isolation to go to work, and eligible businesses will receive a letter from Government naming individuals.

COVID 19 – Construction Leadership Council Site Operating Procedure Update

Following the lifting of restrictions from 19 July, the Government has published updated Working Safely guidance which includes [construction and offices and factories](#). Information on working in other people's homes can now be found within the [construction guide](#). The [Site Operating Procedures](#) remain available as a reference document and should continue to be followed where companies wish to maintain social distancing on site, and the [Use of Face Coverings in Construction](#) has been updated in line with the latest Government guidance.

For more best practice ideas on how to meet the challenges posed by the pandemic on your site visit the [Considerate Constructors Scheme Best Practice Hub](#)

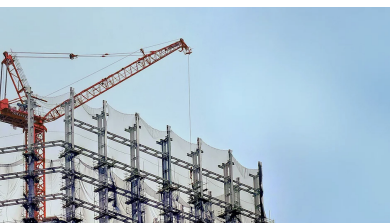
Get Involved...

Do you have something you'd like to contribute to the Insight (best practice, blogs, pictures etc)? If so please contact us on sales@cip-books.com

Dates for the diary...



The Health and Safety Event
7-9 September 2021
Birmingham NEC



Safety in Construction Show
6 October 2021
Holywell Park



Safety and Health Expo
17th – 19th May 2022
London Excel

Not a Subscriber Yet?

The CIP Health & Safety Manual is a great resource to help navigate environmental issues when working in the built environment. It is written by industry experts and provides practical advice on complying with legislation together with best practice. For more information on subscribing to the manual from only £22 per month click [here](#)

[START YOUR FREE TRIAL](#)

