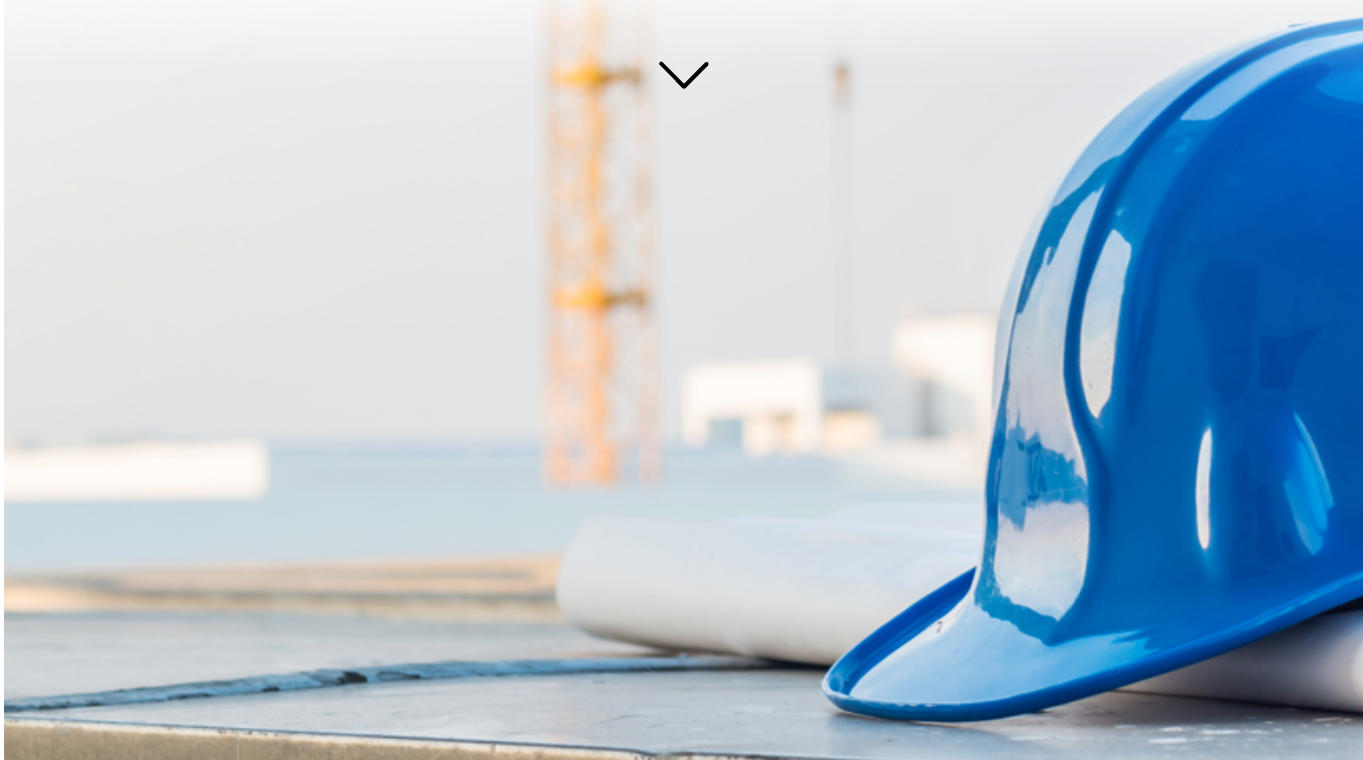


HEALTH & SAFETY INSIGHTS.. ISSUE 32

The CIP Health & Safety Insight is a bimonthly update of what's happening around the health and safety agenda within the built environment. It's free and open to everyone. Some content is only available to subscribers of the CIP Health and Safety Manual and CIP Knowledge.



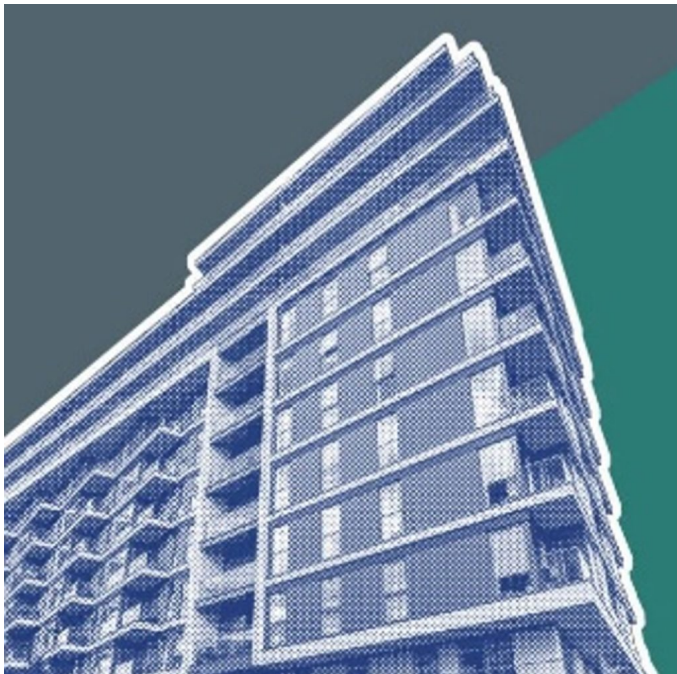
Make Stress Awareness Month the month you make it routine to prevent stress and support mental health at work.

[READ MORE](#)

HSE updates health surveillance guidance: respirable crystalline silica (RCS)

HSE has refreshed its guidance publication 'Health surveillance for those exposed to respirable crystalline silica' C404.

[READ MORE](#)



Building Safety Update

Philip White, Chief Inspector of Buildings and Director of Building Safety at the HSE, has published a [letter](#) on the use of BS 9991 in relation to applications for Building Control Approval, which is supported by an [advisory note](#) from the CLC. They confirm the position set out by Build UK back in January

[READ MORE](#)

Groundbreaking' suicide prevention programme to launch for Scottish construction industry

[BARRATT](#) and [David Wilson Homes North Scotland](#) has joined forces with [SAMH](#) (Scottish Action for Mental Health) to create a new suicide prevention training programme tailored to the Scottish construction industry.

[READ MORE](#)



Health and Safety Event – NEC, Birmingham 8 – 10 April

The Health & Safety Event is gearing up to be an exceptional gathering, inviting over 13,000 health and safety professionals from around the globe to convene once again at the NEC Birmingham from April 8 to April 10, 2025.

[READ MORE](#)

Government looks to simplify Lifting Regulations

The government is planning to review the rules around the use of cranes and lifting machinery, believing them to be unnecessarily onerous.

[READ MORE](#)



Updated Suction and Vacuum Excavator Safe Use Guidance now available

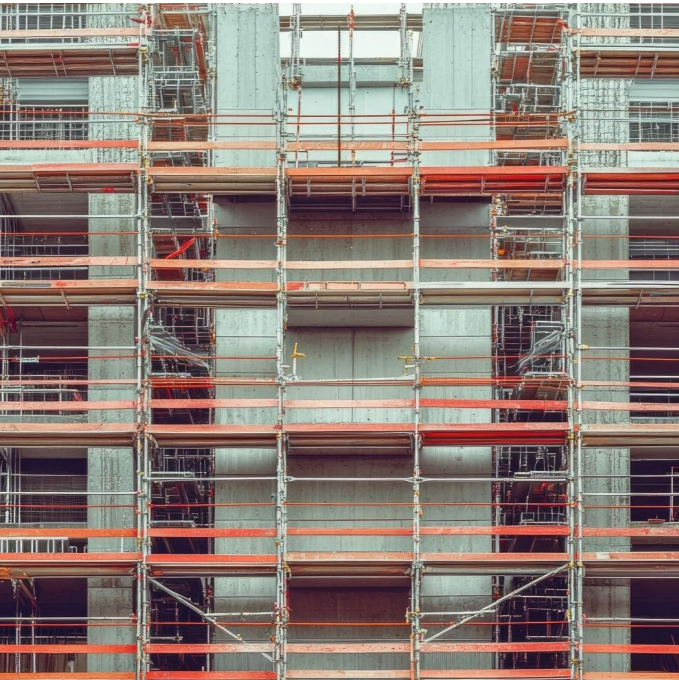
CIP has updated its guidance in the Construction Health and Safety Manual on the use of Suction and Vacuum Excavators following the release of the recently updated Construction Plant-Hire Association's (CPA) Good Practice Guide for the Safe Use of Suction and Vacuum Excavators.

[READ MORE](#)

NASC Introduces TG30, Groundbreaking System Scaffolding Guidance

National Access and Scaffolding Confederation (NASC) has launched TG30, a guidance suite for system scaffolding. This new initiative is set to transform the way system scaffolding is designed and implemented.

[READ MORE](#)



If you have any queries regarding these products please call +44 (0)118 9181591 or alternatively email sales@cip-books.com

