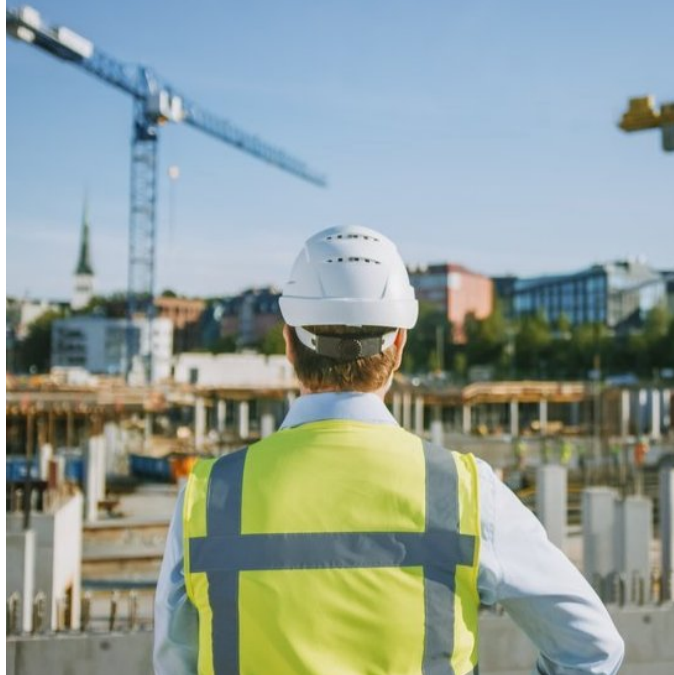
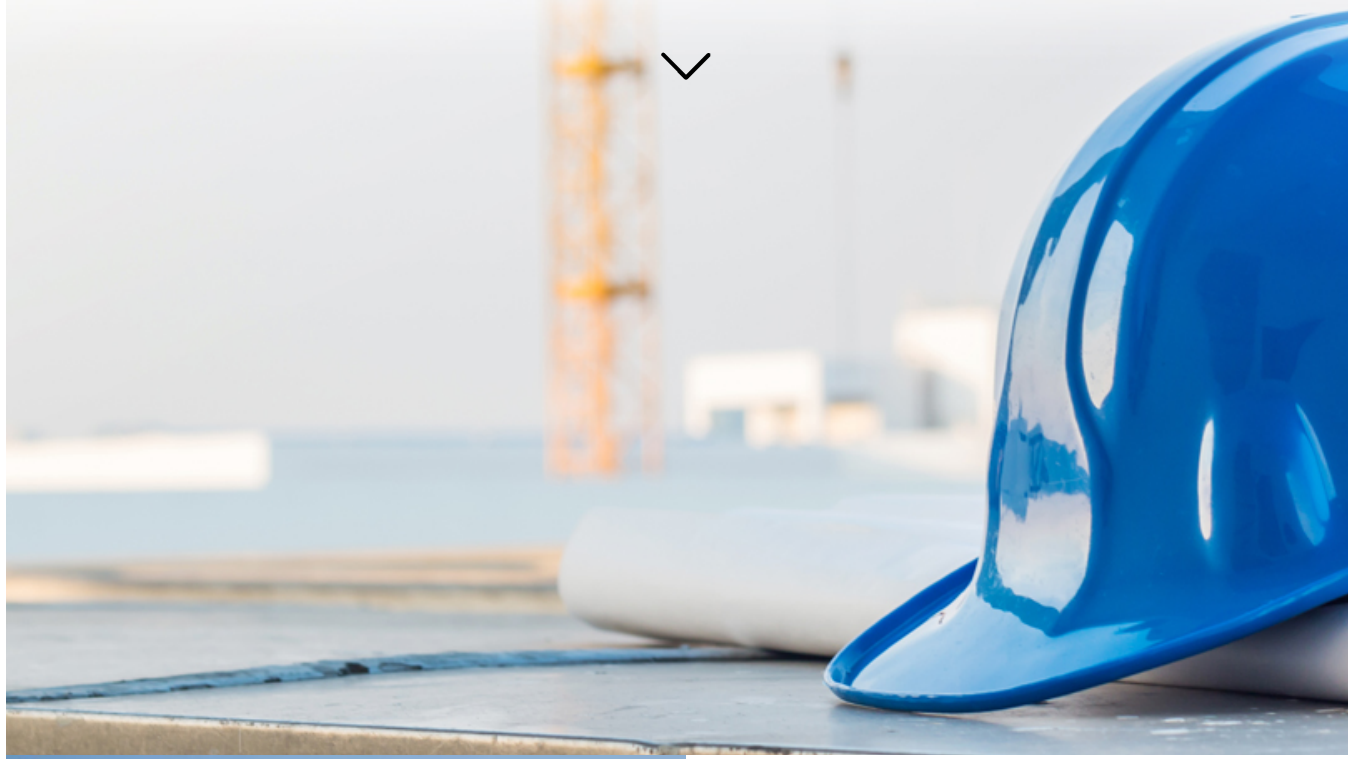


HEALTH & SAFETY INSIGHTS.. ISSUE 22

The CIP Health & Safety Insight is a bimonthly update of what's happening around the health and safety agenda within the built environment. It's free and open to everyone. Some content is only available to subscribers of the CIP Health and Safety Manual and CIP Knowledge.



HSE release latest workplace fatalities details

There were 135 workplace fatalities in Great Britain in the last year, according to the latest statistics from the Health and Safety Executive (HSE), an increase from 123 the previous year.

[READ MORE](#)

Build UK updates Drugs and Alcohol Policy

The Drugs and Alcohol Policy update is in response to calls for a consistent framework for drug and alcohol testing across the construction industry.

[READ MORE](#)

DRUG AND ALCOHOL TESTING



National Grid releases findings of its 'ground-breaking' Health Hub

National Grid has released the findings of its Health Hub initiative at the IFA interconnector Site in Sellindge.

[READ MORE](#)

New sections on Building Safety in the latest update to the Construction Health and Safety Manual

The latest update to the Construction Health and Safety Manual and CIP Knowledge includes a brand new section: Building Safety.

[READ MORE](#)



Free HSE webinar – MSDs and whole body-vibration from driving: manage the risk to your workforce

This free webinar on 25 September 2023, 10.30 – 11.30am will focus on how to effectively manage the risk of MSDs and whole-body vibration from driving.

[READ MORE](#)

Building Safety Update

The [Construction Leadership Council](#) has released its latest Building Safety Update

[READ MORE](#)



If you have any queries regarding these products please call 0870 078 4400 or alternatively email sales@cip-books.com

