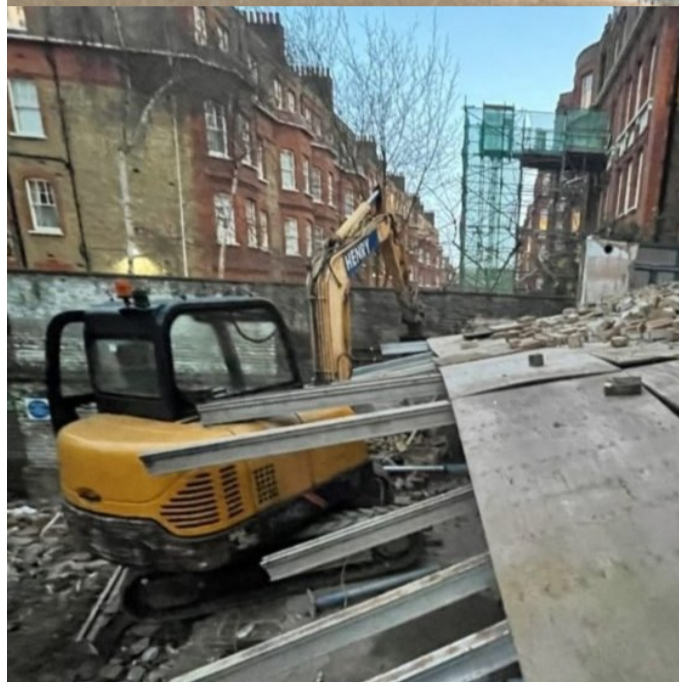


# HEALTH & SAFETY INSIGHTS.. ISSUE 21

The CIP Health & Safety Insight is a bimonthly update of what's happening around the health and safety agenda within the built environment. It's free and open to everyone. Some content is only available to subscribers of the CIP Health and Safety Manual and CIP Knowledge.



## Building company fined £234,000 after worker falls from platform

A building company received a fine after a worker suffered serious injuries after falling from a platform in London.

[READ MORE](#)

## June 2023 updates to CIP Construction Health and Safety Manual

The June update includes a brand new section on the Building Safety Act that will be added to as the introduction of the secondary legislation supporting the Act starts to impact on the way construction health and safety is managed.

[READ MORE](#)



## HSE to target building site dust

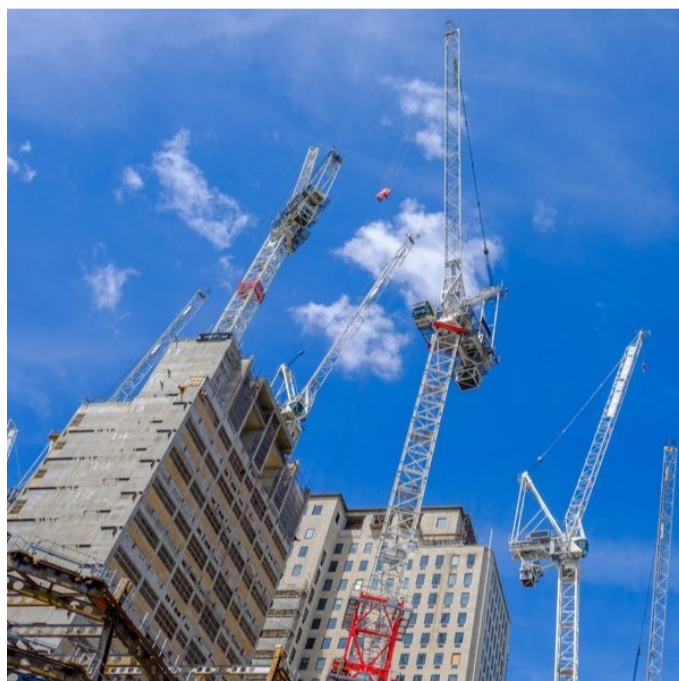
The Health and Safety Executive (HSE) has launched a health and safety inspections blitz targeting the handling of building site dust.

[READ MORE](#)

## IPAF launches 'High Voltage!' safety campaign

The International Powered Access Federation (IPAF) has launched a new targeted safety campaign, 'High Voltage!'

[READ MORE](#)



## HS&E Test Changes

There have been updates to the Health, Safety & Environment Test for Managers and Professionals to reflect changes in legislation, working practices, technology and industry needs.

[READ MORE](#)

## Retained EU Law Bill

The Government has published the list of [EU laws](#) that will be revoked at the end of this year.

[READ MORE](#)



If you have any queries regarding these products please call 0870 078 4400 or alternatively email [sales@cip-books.com](mailto:sales@cip-books.com)

