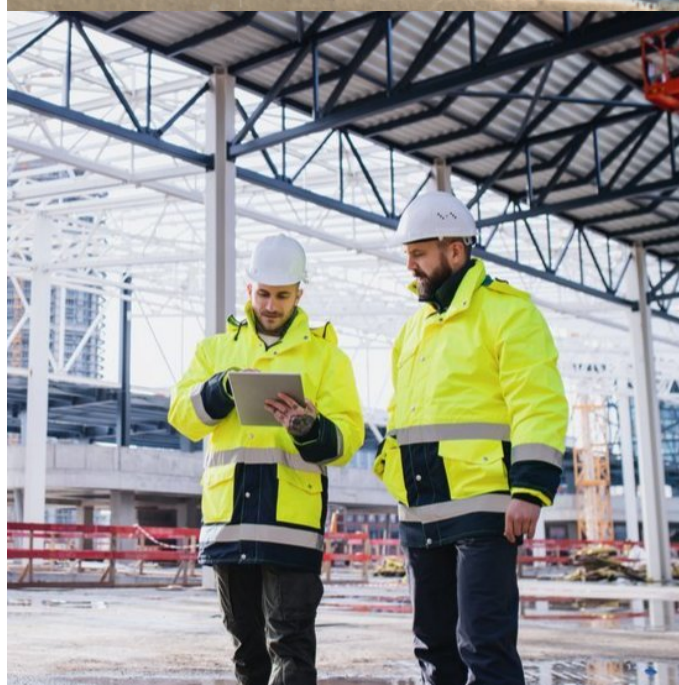
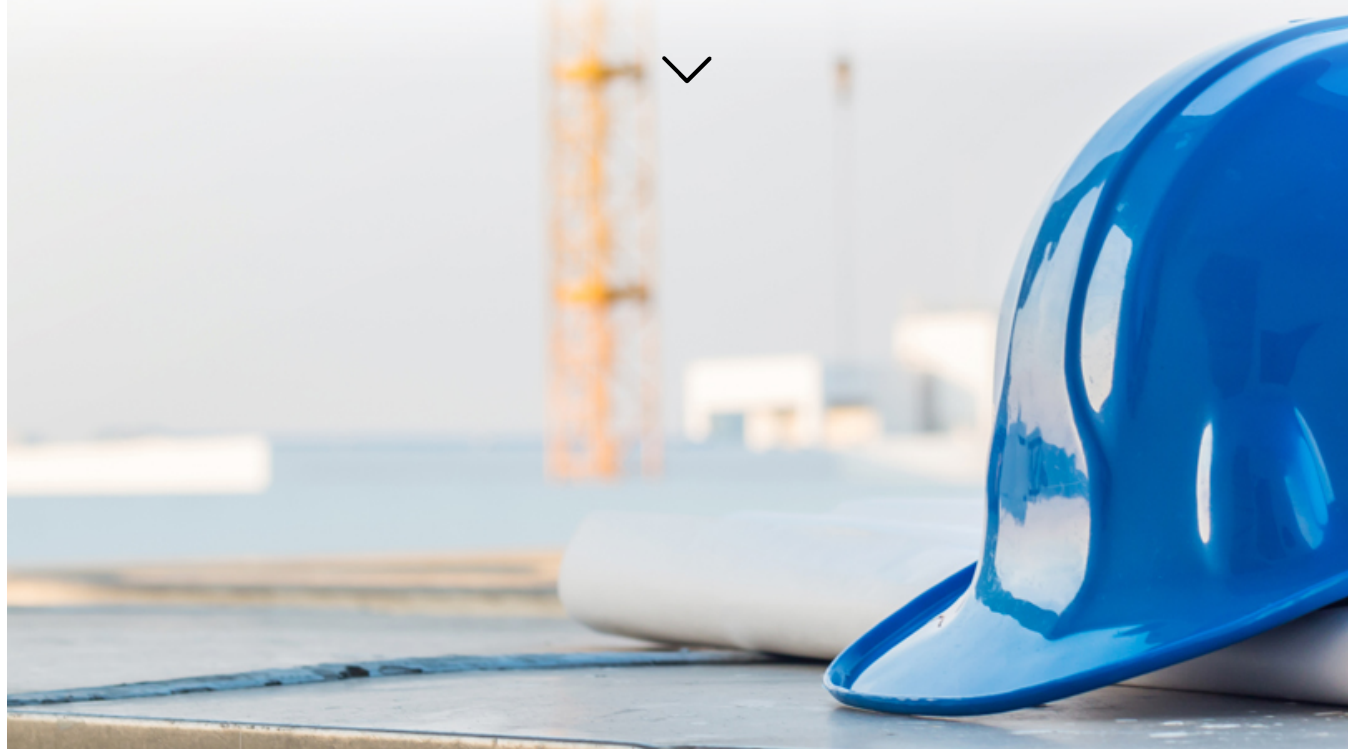


# HEALTH & SAFETY INSIGHTS.. ISSUE 18

The CIP Health & Safety Insight is a bimonthly update of what's happening around the health and safety agenda within the built environment. It's free and open to everyone. Some content is only available to subscribers of the CIP Health and Safety Manual and CIP Knowledge.



## HSE releases annual health and safety statistics 2021/2022

The HSE has published the latest annual health and safety statistics for Great Britain.

[READ MORE](#)

## MEWP Guidance

New MEWP guidance is now available for construction firms.

IPAF has issued guidance on the 'catapult' or whiplash effect which can occur when using mobile elevating work platforms (MEWPs) and result in occupants or materials being ejected from the MEWP.

[READ MORE](#)



## Fatal skylight fall – company and director sentenced

A Wakefield roofing company has been fined and its sole director given a suspended sentence after a dad-of-two died in a skylight fall. Jonathan May, 39, from Horbury, Wakefield, fell 12 metres through a skylight to his death.

[READ MORE](#)

## New Drugs and Alcohol Policy

Build UK, working with [Eurofins Workplace Drug Testing](#), has published a template Drugs and Alcohol Policy.

[READ MORE](#)



## HSE help to support workers with long-term health conditions and disabled workers

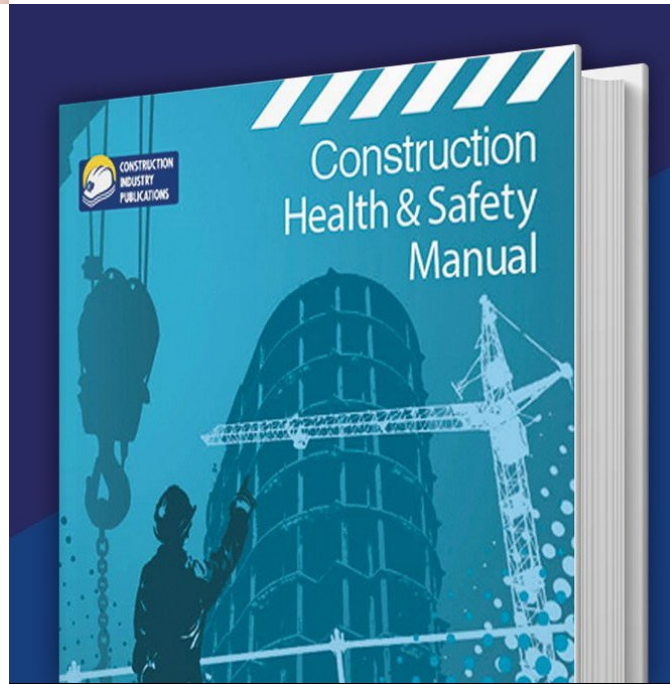
HSE has published new principles and guidance to support businesses and help them create an inclusive approach to workplace health.

[READ MORE](#)

## New updates to the online Construction Health and Safety Manual – Buy now for a 25% discount

The new version of the online Construction Health and Safety Manual is now available. If you buy it now, you'll enjoy a 25% discount.

[READ MORE](#)



If you have any queries regarding these products please call 0870 078 4400 or alternatively email [sales@cip-books.com](mailto:sales@cip-books.com)

