

# HEALTH & SAFETY INSIGHTS.. ISSUE 16

The CIP Health & Safety Insight is a bimonthly update of what's happening around the health and safety agenda within the built environment. It's free and open to everyone. Some content is only available to subscribers of the CIP Health and Safety Manual and CIP Knowledge.



## Balfour rolls out auto cone laying machines across road jobs

Balfour Beatty has become the first construction company in the UK to roll out Automated Cone Laying Machines.

[READ MORE](#)

## Workplace fatality figures for 2021/22 released by HSE

HSE recently released its annual workplace fatality figures for 2021/22. The figures show a total of 123 workers were killed at work in Great Britain between April 2021 and March 2022.

[READ MORE](#)



## FREE Diabetes Awareness in the Workplace Webinar

A diabetes awareness in the workplace webinar is now available to view for free online.

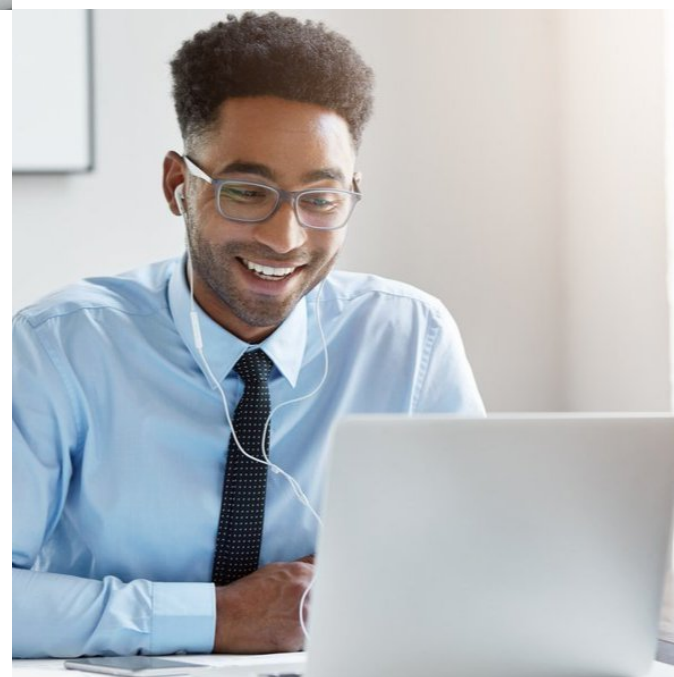
[Osborn Abas Hunt / Yellow Triangle](#) and Diabetes Safety Organisation are delighted to now share access to 'Are you diabetes safe?'

[READ MORE](#)

## HSE Training Courses from a HSE inspector's point of view

HSE is running live online training courses during autumn 2022, giving an insight into what inspectors look for during investigations.

[READ MORE](#)



## Trade associations sound fire alarm over pre-insulated pipework

Two leading trade associations have called for more rigorous checks on the fire safety of pre-insulated pipework installed in buildings.

[READ MORE](#)

## Online manual for Construction Health and Safety updated – 25% discount available now

There is a new version of the online Construction Health and Safety Manual. Plus, you get a 25% discount if you buy it now.

[READ MORE](#)



If you have any queries regarding these products please call 0870 078 4400 or alternatively email [sales@cip-books.com](mailto:sales@cip-books.com)

