

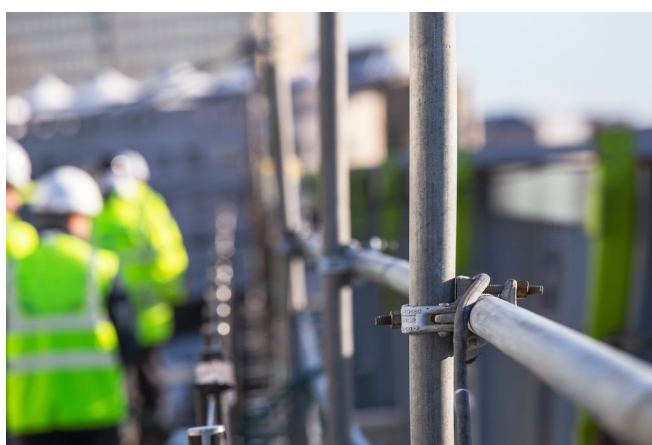
Health & Safety Insight - Issue 14

Snapshot of what's happening in the world of health and safety

The CIP Health & Safety Insight is a bimonthly update of what's happening around the health and safety agenda within the built environment. It's free and open to everyone. Some content is only available to subscribers of the CIP Health and Safety Manual and CIP Knowledge.

News & Policy Updates

Construction company prosecuted after workers fell from height



A construction company received a sentence after two bricklayers fell from height during the construction of a parapet wall.

Manchester Magistrates' Court heard that on 31 October 2019, two employees suffered serious injuries at a property in Over Alderley, Cheshire.

The incident happened when the makeshift platform they were working on collapsed.

[READ MORE...](#)

Confirmation bias



How does confirmation bias come into play in accident investigations?

Ryan Gledhill, solicitor from [OAH](#), explains how cognitive biases can affect how we investigate accidents.

What do we mean by confirmation bias?

The most prevalent cognitive bias in an accident investigation is confirmation bias.

[CONTINUE READING](#)

Mental Health Standard

A new international standard on mental health, [ISO 45003](#), has been published to provide guidance on managing the psychological health of the workforce as part of an occupational H&S management system. It is available free of charge to [SMEs](#) and other organisations can purchase it from BSI.

Safety Groups UK Awards back for 2022



Safety Groups UK is relaunching its awards programme to recognise excellence in health and safety innovation and education.

The awards are open to individuals and organisations who wish to gain recognition for their success and make their ideas available to others to use free of charge.

You may think your efforts have been small with limited success, but why not let the judges decide?

[READ MORE..](#)

Start conversations with workers and support good mental health



How can we promote good mental health in the workplace?

In Great Britain, over 800,000 workers suffered from work-related stress, depression or anxiety in 2020/21.

The [HSE's Talking Toolkits](#) can help you start conversations to identify causes of stress for your workers and identify possible solutions.

Visit HSE's website for more guidance on [managing work-related stress](#).

[CONTINUE READING](#)

Measure your safety culture with HSE's Safety Climate Tool



Evidence shows that a strong safety culture leads to fewer workplace near misses and injuries.

With this in mind, scientists created [HSE's Safety Climate Tool \(SCT\)](#) to assess the attitudes of individuals within an organisation towards health and safety issues.

Using a simple online questionnaire, it explores your workers' attitudes and perceptions in key areas of health and safety. Plus, it guarantees total anonymity.

[CONTINUE READING](#)

Research Participants Needed



Research participants are needed for a study about women's experiences with safety footwear.

Debbie Janson, senior lecturer at the University of Bath, is facilitating a research project on women's experiences with Personal Protection Equipment, specifically safety footwear.

Do you fancy volunteering and taking part in this research?

[MORE INFORMATION](#)

Protect feet at work



How can you protect your feet at work?

You could say feet are one of the most hard-working yet most neglected parts of our bodies.

We take it for granted they will keep us upright, balanced and mobile.

Yet, we only ever seem to pay them attention when something goes wrong.

[READ MORE](#)

Get Involved...

Do you have something you'd like to contribute to the Insight (best practice, blogs, pictures etc)? If so please contact us on sales@cip-books.com

Dates for the diary...



Safety and Health Expo
Excel London 17 - 19 May 2022



Safety Health & Wellbeing
23-24 May Manchester 28-29 Sept
Farnborough International

For more best practice ideas on how to meet the challenges posed by the pandemic on your site visit the **Considerate Constructors Scheme Best Practice Hub**

Not a Subscriber Yet?

The CIP Health & Safety Manual is a great resource to help navigate environmental issues when working in the built environment. It is written by industry experts and provides practical advice on complying with legislation together with best practice. For more information on subscribing to the manual from only £22 per month click [here](#)

[START YOUR FREE TRIAL](#)

